

june.

where it's always summer



THE INSPIRATION



THE MIAMI INSPIRED TOWN



where splashes of South Beach are seen all over the Miami-inspired locale.

Known for its gorgeous beaches, art-deco architecture, warm weather, Ocean drive. From iconic **designs** to glamorous environments, you will be in a simpler time, made for **the modern mindset**.

When you're feeling carefree, on top of the world and wholly at ease with yourself, you know, **it must be June**.



A TRUE TOWN BEACH EXPERINEECE



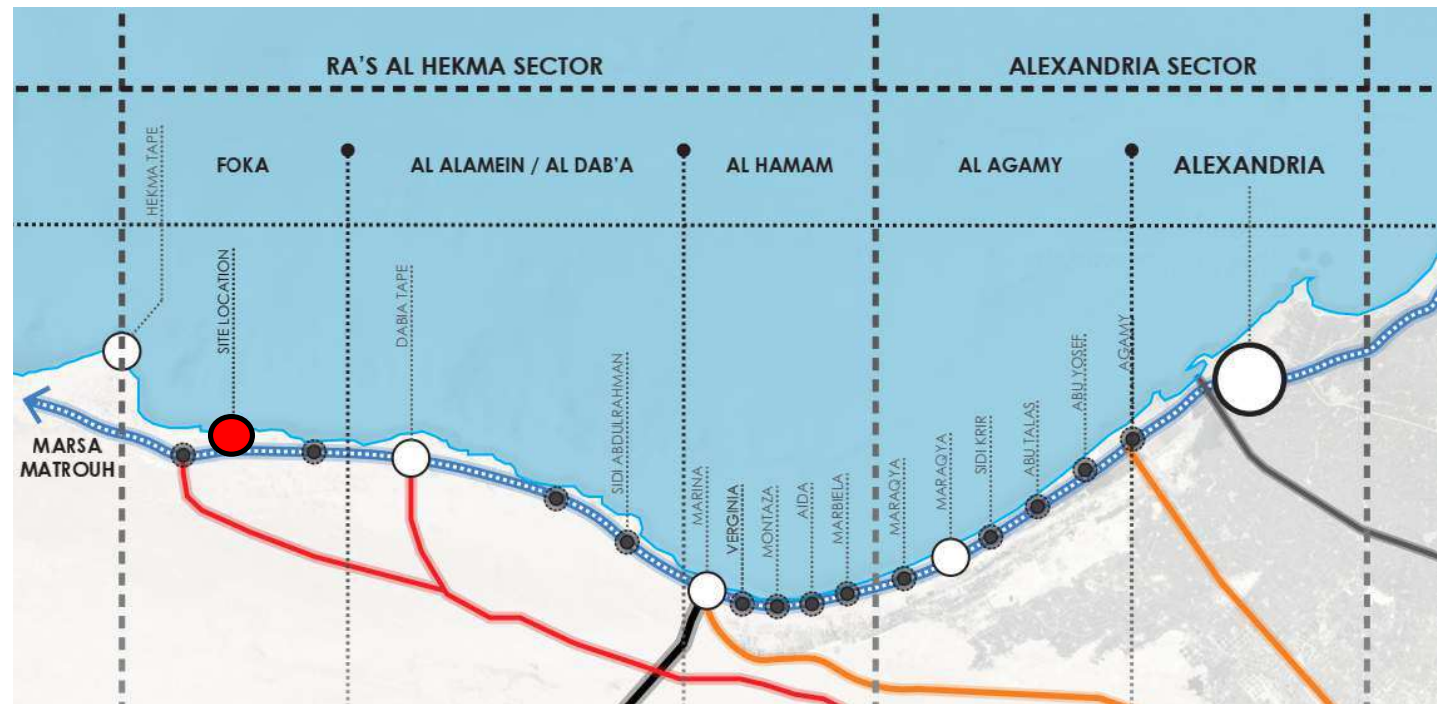
June is a new town summer destination, that **has the best of both worlds**, the high spirits coupled with the calm, serene Sahel, It's Miami's lively South Beach, with the rows of Palm Trees that greet you



IT'S WHERE IT'S HAPPENING NEXT...

Located at the **90 KM** Matrouh-Alex Road, The development portrays more than 280 acres of scenic coastline.

June, is 8 kilometers away from Caesar With the recently opened Dabaa Road, commuting from Cairo has never felt more like a summer breeze.



AN ARCHITECTURAL REVIVAL THE ART DECO



A style of **decorative architecture**. This style is known as **Art Deco**, inspired by Miami Beach's cluster of iconic architecture. June features an iconic design with its spherical appearance and curvy corners. Embodying art-deco, revel in the neon lighting, porthole windows, terrazzo floors, Ziggurat roof tiles and glass blocks in this, Modern-Mediterranean take on Miami.





UNMATCHED FACILITIES

June has everything you could ever wish for in a beach town.

- The Boardwalk
- The Clubhouse
- The Hotel
- The F&B & Retail Outlets
- The Local Transportation
- Eco Friendly Town
- Outdoor Gym
- Horizon Pools
- Serviced Hotel Apartments
- The Essential Amenities
- Clinics- Supermarket-Mosque-Park & Kids Activities



THE BEACH



In June, the beach is never out of reach. See and be seen at a cool hotspot and jam at the many beachfront outlets and venues that bring the party to life. Hit up the many seaside activities or take some time to yourself on the more serene patch, of pristine peace-of-mind.



THE BOARDWALK

June is a natural environment interconnected for your convenience. Pedestrian only tracks dedicated to walking, jogging, rollerblading, skateboarding, scooters and bicycles abound in this refreshing climate within an awesome, summer atmosphere.

June's boardwalk is bringing different entertainments, nightlife, young vibes and diverse activations.

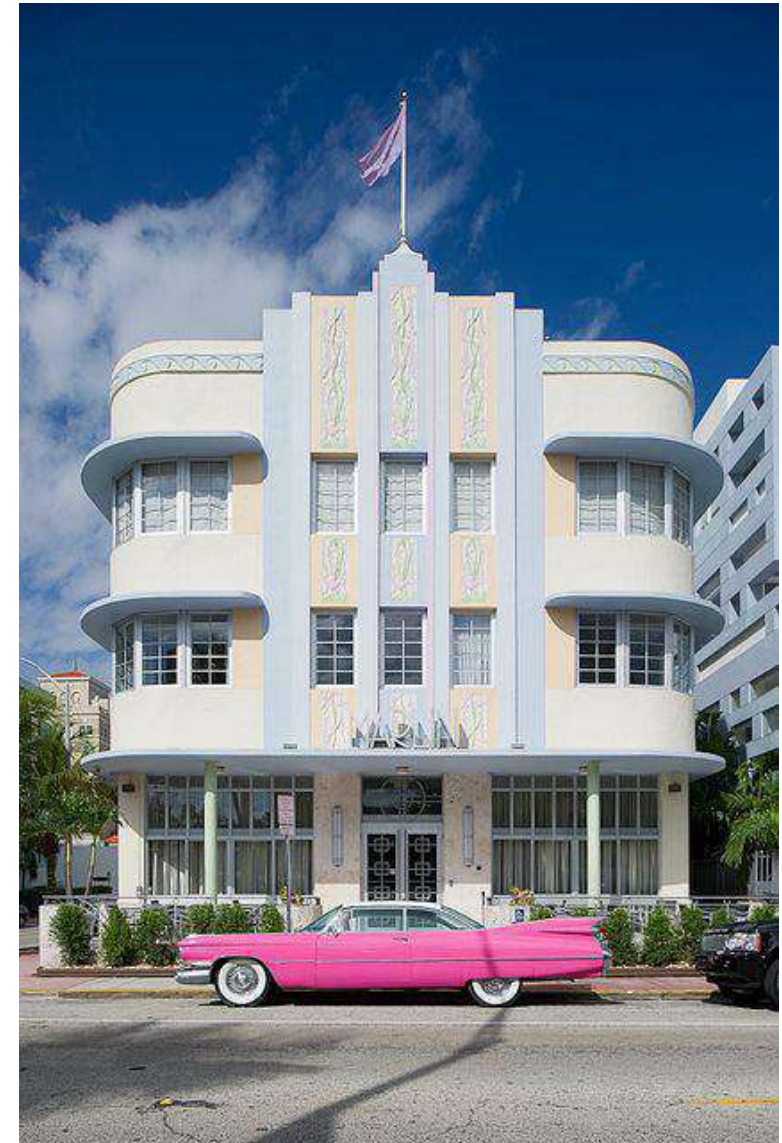


THE HOTEL



A hotel component set on the natural levels of the plot to establish an elevated luxurious serene zone with exquisite views.

Right off the beach you will find the hotel taking you on an exclusive journey of comfort with more than 200 keys.



SERVICED / BRANDED CHALETS



June offers one-of-a-kind, hip, serviced chalets with windows that open on crystal clear views of the majestic Mediterranean Sea. Reside in style all summer at the trendy Boardwalk, where the sea is always calling, to cheer you on and up.



THE CLUBHOUSE

Situated in the heart of the community overlooking the mesmerizing lagoon, the clubhouse features an array of leisure, sports and fitness facilities all closer to home.



THE LAGOONS

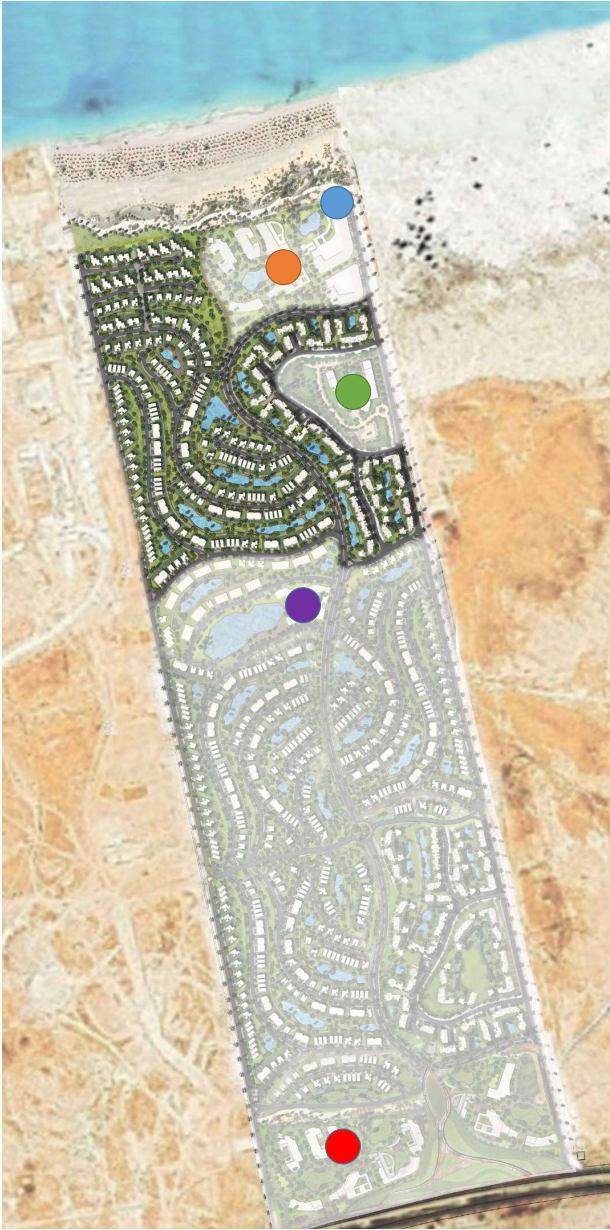
Swimmable Lagoons around June not only add to the beauty of the place, but also provide a nourishing moisture into the air. The natural, calm waters transcend your state of mind to the utmost relaxing place. The lagoons are easily accessible from all points of this beach town and in some exclusive cases, may be right in front of your seaside home.

100K of water
bodies



THE COMPONENTS

- BEACH CLUB
- HOTEL
- THE TOWN
- CLUB HOUSE
- RETAIL



LIVE ELEVATED



Using the natural levels of the plot to establish an elevated luxurious serene zone/parcel with exquisite views. For villas to discover a serene and collected neighborhood from a magnificent elevation with unobstructed views of gorgeous, endless, panoramic horizons.



SITE LEVELS



Elevated town on multiple levels.



THE OPAL VILLAS

- The launched units features an exquisite architecture.
- Studied levels and alignments leading to achieve more than 80% of premium views complementing the units.
- The following zone features sea front and sea view single family units



THE CORAL VILLAS



- The launched units features an exquisite architecture.
- Studied levels and alignments leading to achieve more than 80% of premium views complementing the units.
- The following zone features sea front and sea view single family units



JUNE HOMES





THE SHORELINE VILLAS

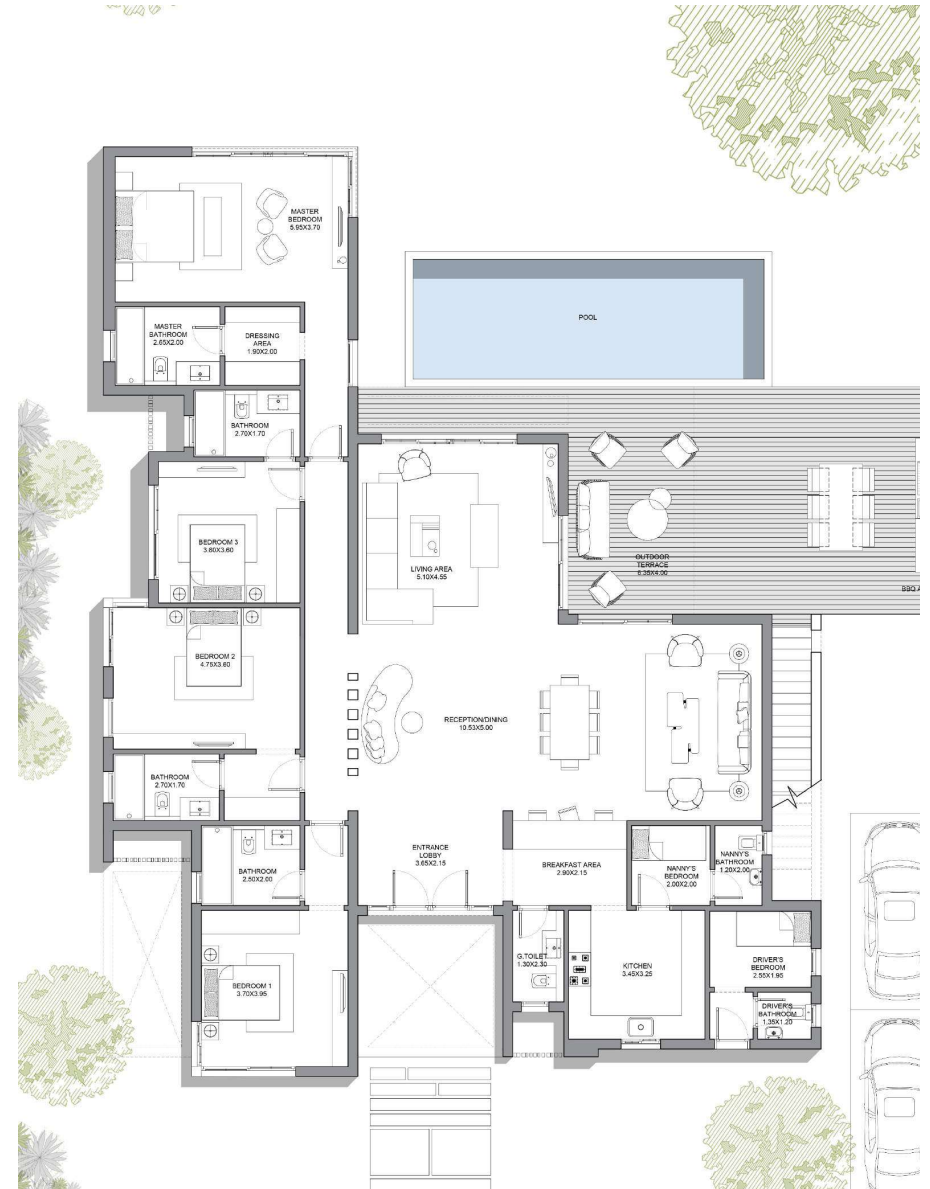
THE SHORELINE VILLA -1

**4 BEDROOM
NANNY'S ROOM
DRIVER'S ROOM**

**AREA 278 SQM
Avg. Plot 920 SQM**

Disclaimer:

- Diagrams are not to scale and all for illustrative purposes
- SODIC reserves the rights to make minor alterations
- All rendering and other visual material, designs, facades are for illustrative purposes and are only subject to change
- SODIC reserves all the right to use different finishing elements and sanitary fixtures models from those which are shown in renders and specification sheets
- Final models used in our finishing are similar and subject to market and availability at the time of operations
- This brochure contains material, which is owned by or licensed to SODIC
- This material includes, but not limited to the design, layout, look, appearance and graphics
- Reproduction is prohibited





THE SEASIDE VILLA

THE SEASIDE VILLA

**4 BEDROOM
NANNY'S ROOM
DRIVER'S ROOM**

**AREA 278 SQM
Avg. Plot 1000 SQM**



Disclaimer:

- Diagrams are not to scale and all for illustrative purposes
- SODIC reserves the rights to make minor alterations
- All rendering and other visual material, designs, facades are for illustrative purposes and are only subject to change
- SODIC reserves all the right to use different finishing elements and sanitary fixtures models from those which are shown in renders and specification sheets
- Final models used in our finishing are similar and subject to market and availability at the time of operations
- This brochure contains material, which is owned by or licensed to SODIC
- This material includes, but not limited to the design, layout, look, appearance and graphics
- Reproduction is prohibited

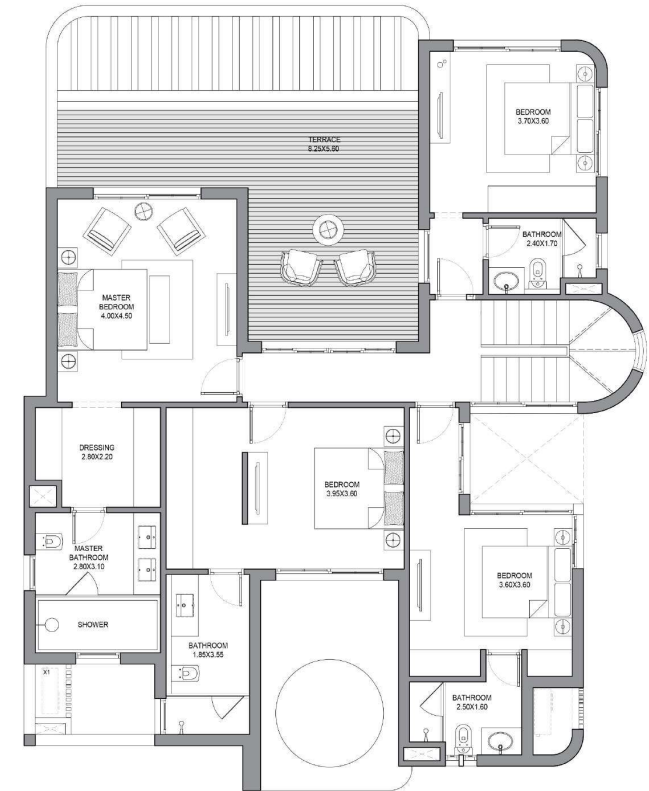
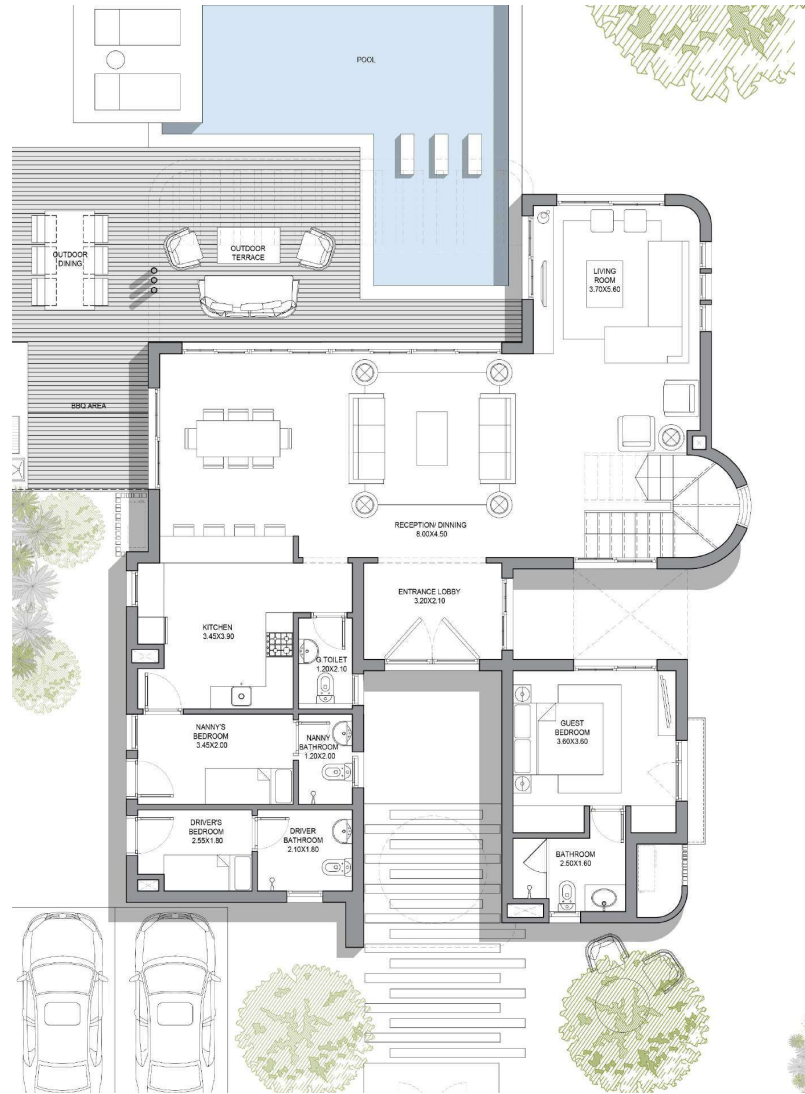


V1

V1

5 BEDROOM
NANNY'S ROOM
DRIVER'S ROOM

AREA 327 SQM
Avg. Plot 680 SQM



Disclaimer:

- Diagrams are not to scale and all for illustrative purposes
- SODIC reserves the rights to make minor alterations
- All rendering and other visual material, designs, facades are for illustrative purposes and are only subject to change
- SODIC reserves all the right to use different finishing elements and sanitary fixtures models from those which are shown in renders and specification sheets
- Final models used in our finishing are similar and subject to market and availability at the time of operations
- This brochure contains material, which is owned by or licensed to SODIC
- This material includes, but not limited to the design, layout, look, appearance and graphics
- Reproduction is prohibited

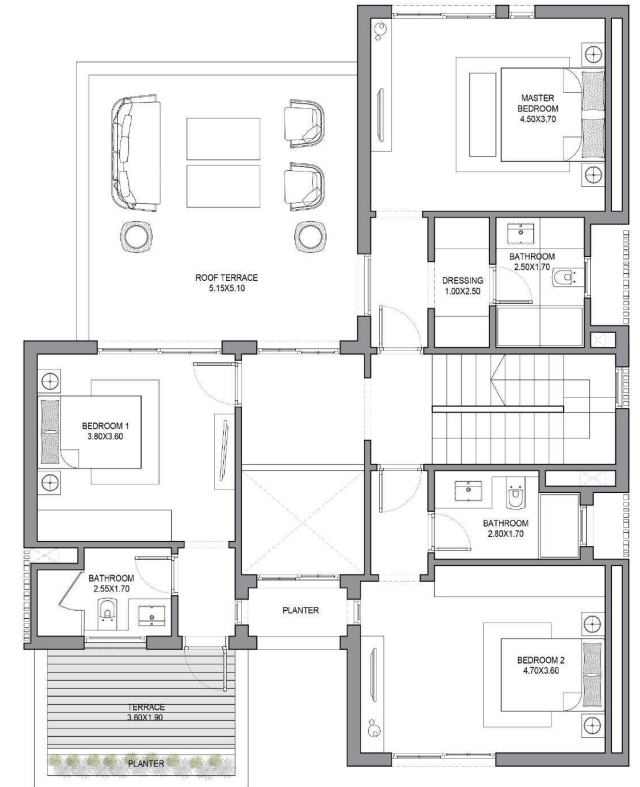


V2

V2

**4 BEDROOM
NANNY'S ROOM
DRIVER'S ROOM**

**AREA 263 SQM
Avg. Plot 550 SQM**



Disclaimer:

- Diagrams are not to scale and all for illustrative purposes
- SODIC reserves the rights to make minor alterations
- All rendering and other visual material, designs, facades are for illustrative purposes and are only subject to change
- SODIC reserves all the right to use different finishing, elements and sanitary fixtures, models from those which are shown in renders and specification sheets
- Final models used in our finishing, are similar and subject to market and availability at the time of operations
- This brochure contains material, which is owned by or licensed to SODIC
- This material includes, but not limited to the design, layout, look, appearance and graphics
- Reproduction is prohibited

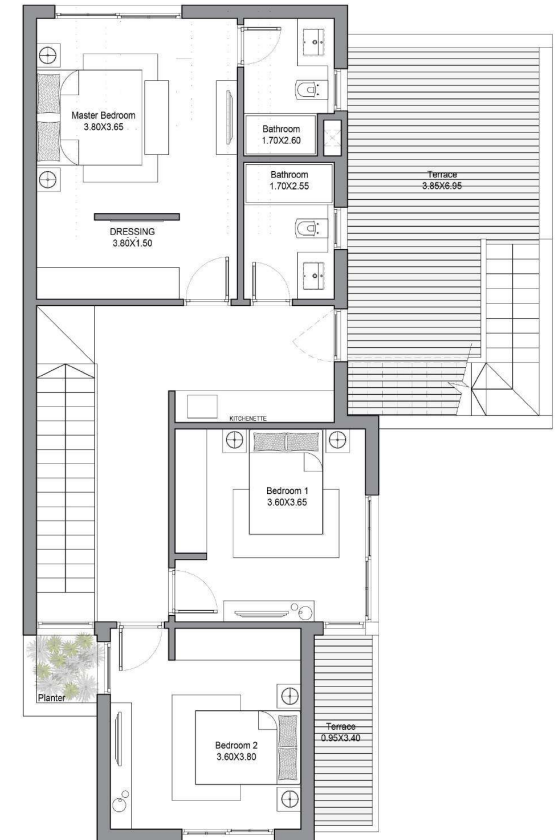


V3

V3

3 BEDROOM

AREA 220 SQM
Avg. Plot 322 SQM



Disclaimer:

- Diagrams are not to scale and all for illustrative purposes
- SODIC reserves the rights to make minor alterations
- All rendering and other visual material, designs, facades are for illustrative purposes and are only subject to change
- SODIC reserves all the right to use different finishing elements and sanitary fixtures models from those which are shown in renders and specification sheets
- Final models used in our finishing are similar and subject to market and availability at the time of operations
- This brochure contains material, which is owned by or licensed to SODIC
- This material includes, but not limited to the design, layout, look, appearance and graphics
- Reproduction is prohibited



THE TOWNHOMES

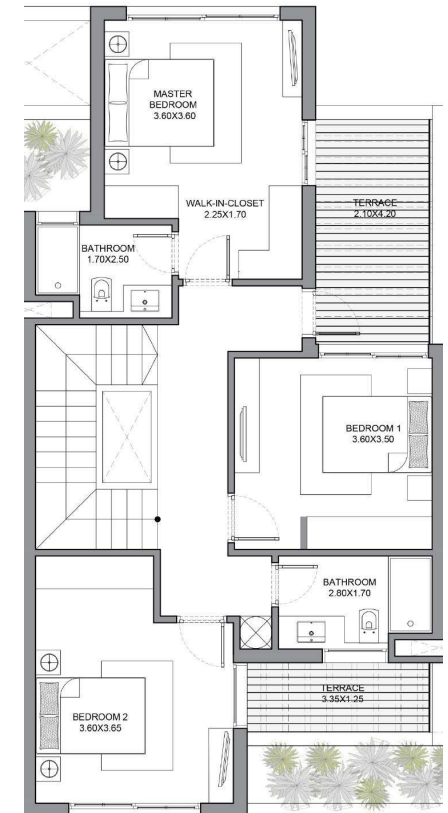
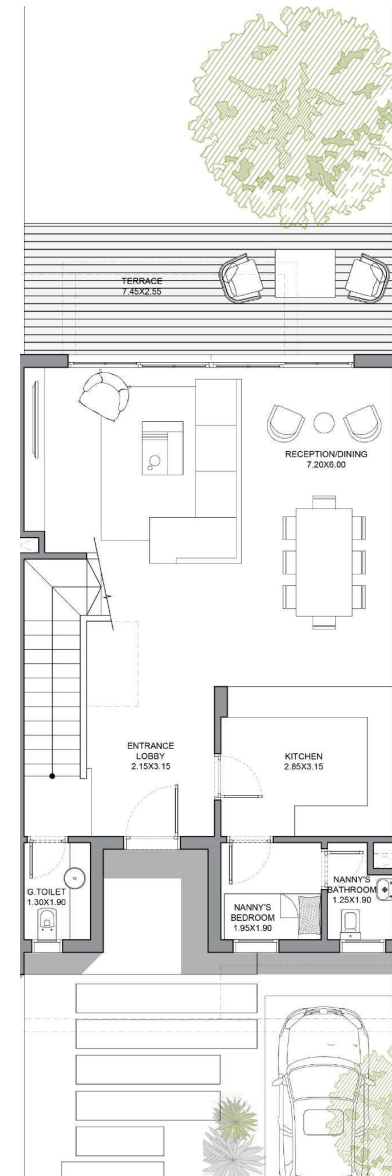
THE TOWNHOMES

3 BEDROOM

AREA 196 SQM

Avg. Plot Corner 370 SQM

Avg. Plot Middle 225 SQM



Disclaimer:

- Diagrams are not to scale and all for illustrative purposes
- SODIC reserves the rights to make minor alterations
- All rendering and other visual material, designs, facades are for illustrative purposes and are only subject to change
- SODIC reserves all the right to use different finishing elements and sanitary fixtures models from those which are shown in renders and specification sheets
- Final models used in our finishing are similar and subject to market and availability at the time of operations
- This brochure contains material, which is owned by or licensed to SODIC
- This material includes, but not limited to the design, layout, look, appearance and graphics
- Reproduction is prohibited

AQUA CHALETS



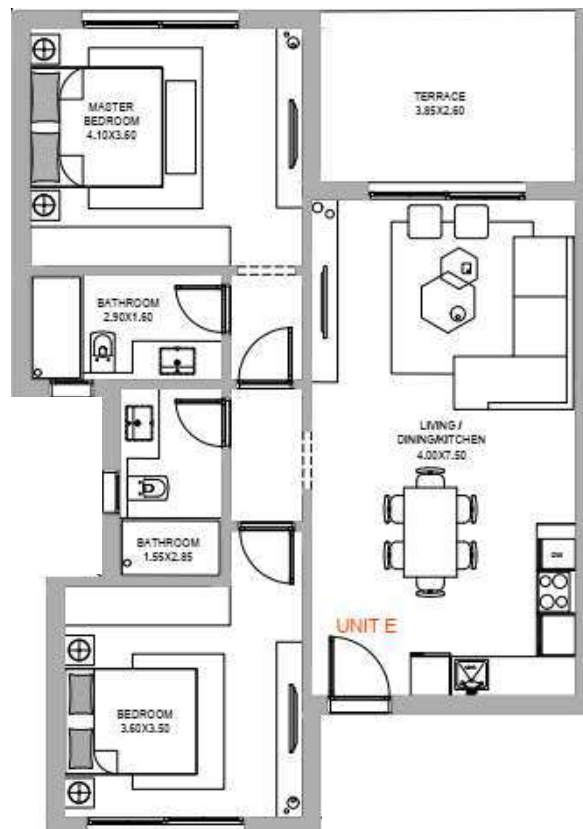
- The launched chalets features an exquisite architecture with the highest efficiency.
- Studied levels and alignments leading to achieve more than 80% of premium views complementing the units.
- Featuring sea view elevated chalets, supplemented with infinite pools and rich landscape.





2 BR CHALETS

AREA 106 -116 SQM

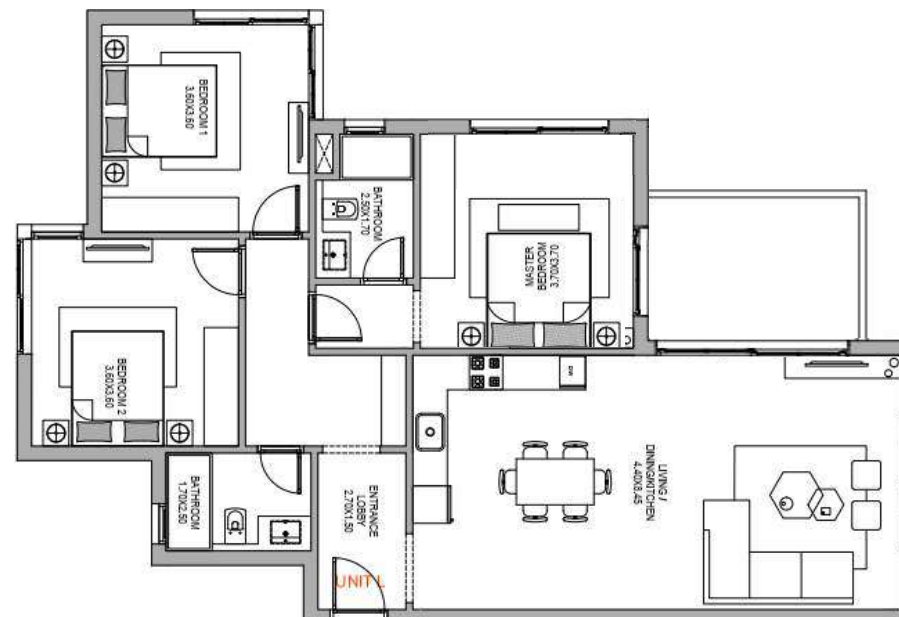
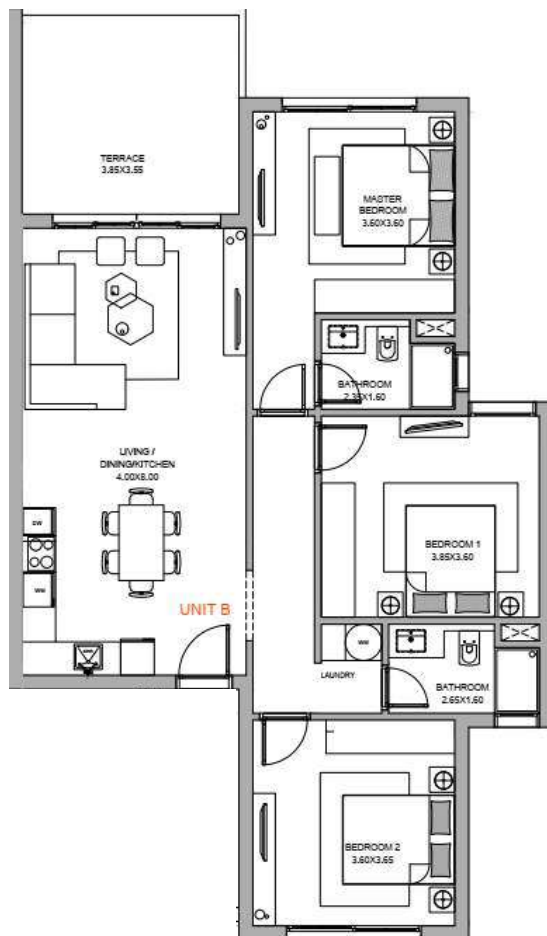


Disclaimer:

- Diagrams are not to scale and all for illustrative purposes
- SODIC reserves the rights to make minor alterations
- All rendering and other visual material, designs, facades are for illustrative purposes and are only subject to change
- SODIC reserves all the right to use different finishing elements and sanitary fixtures models from those which are shown in renders and specification sheets
- Final models used in our finishing are similar and subject to market and availability at the time of operations
- This brochure contains material, which is owned by or licensed to SODIC
- This material includes, but not limited to the design, layout, look, appearance and graphics
- Reproduction is prohibited

3 BR CHALETS

AREA 130 -140 SQM

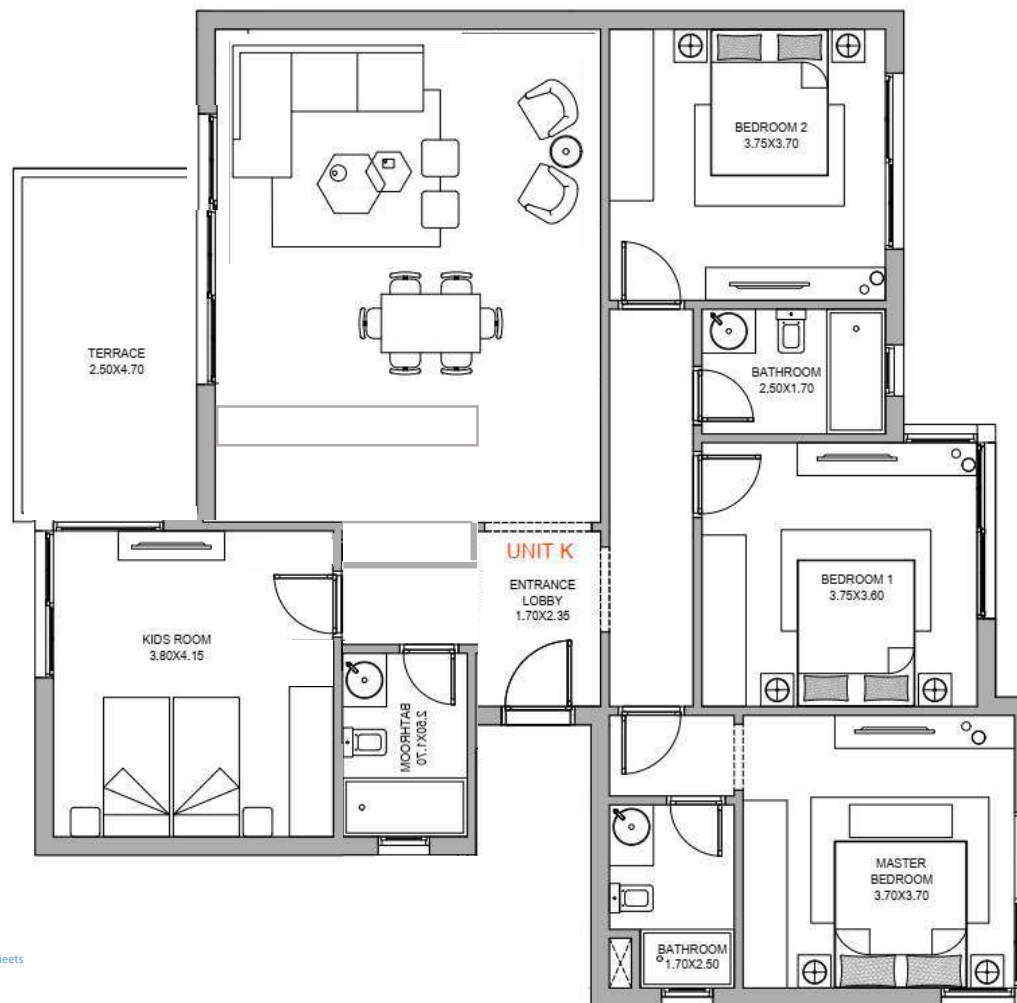


Disclaimer:

- Diagrams are not to scale and all for illustrative purposes
- SODIC reserves the rights to make minor alterations
- All rendering and other visual material, designs, facades are for illustrative purposes and are only subject to change
- SODIC reserves all the right to use different finishing elements and sanitary fixtures models from those which are shown in renders and specification sheets
- Final models used in our finishing are similar and subject to market and availability at the time of operations
- This brochure contains material, which is owned by or licensed to SODIC
- This material includes, but not limited to the design, layout, look, appearance and graphics
- Reproduction is prohibited

4 BR CHALETS

AREA 172 SQM



Disclaimer:

- Diagrams are not to scale and all for illustrative purposes
- SODIC reserves the rights to make minor alterations
- All rendering and other visual material, designs, facades are for illustrative purposes and are only subject to change
- SODIC reserves all the right to use different finishing elements and sanitary fixtures models from those which are shown in renders and specification sheets
- Final models used in our finishing are similar and subject to market and availability at the time of operations
- This brochure contains material, which is owned by or licensed to SODIC
- This material includes, but not limited to the design, layout, look, appearance and graphics
- Reproduction is prohibited

june.

where it's always summer